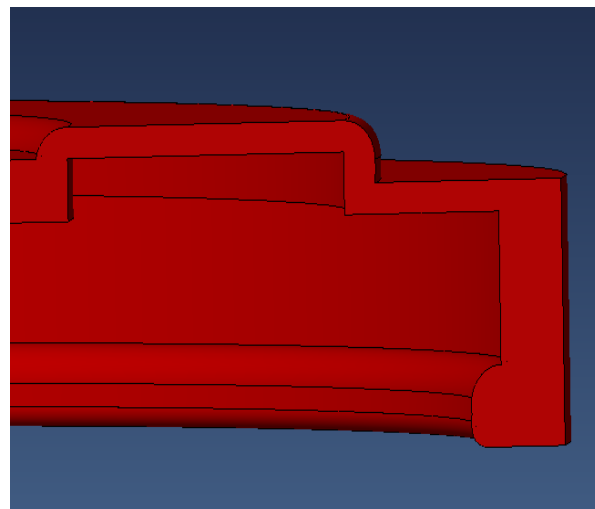


# Slip Lid

Issue: Sept 2019



Talisman's range of Caps and Closures are manufactured in the UK and offer consistent high-quality performance for the most demanding of applications.

The lid is designed to clip under the rim of the metal can creating a secure air tight closure. The ridge on the face of the lid is to help create a stable platform for stacking cans and add rigidity to the lid.

Product Code	Internal Diameter		Depth	Part Weight (g)	Box Quantity
	Imperial	Metric			
CL7000	3"	76.2mm	8.5mm	4.5g	1700
CL7003	4"	101.6mm	7.0mm	10.0g	900
CL7005	4.5"	114.3mm	8.5mm	11.7g	500
CL7006	4.75"	120.65mm	8.5mm	12.0g	500
CL7007	6"	152.4mm	8.7mm	21.5g	300
CL7008	7"	177.8mm	7.5mm	28.0g	300

## Technical Data

### Applications

Resealable and reusable cover. Used on metal or composite containers, across a range of markets.

### Material

#### 100% Recyclable Low-Density Polyethylene

Recycling code for PE: 4

- Melt Flow Index = 22
- Density Nominal = 0.919

Low Density Polyethylene complies with the regulations concerning the use of polymeric materials in connection with food.

### Colour

Standard colours – Natural & Black  
Other colours are available on request

### Packaging

Tumbled Packed in boxes

### Delivery

Free delivery Mainland UK, subject to minimum order quantity

**TEL: 01684 892892**

Email: [sales@talismancapsandclosures.co.uk](mailto:sales@talismancapsandclosures.co.uk)

Fax: 01684 892330

[www.talimancapsandclosures.com](http://www.talimancapsandclosures.com)

Talisman Caps & Closures is a division of Talisman Plastics Ltd. Spring Lane, Malvern, Worcestershire, WR14 1BS